

# Effisus EPDM ConnectionSeal

## EPDM WEATHERPROOFING SOLUTION

Effisus **EPDM ConnectionSeal** Membrane is a high-performance, durable sealing solution developed for façade systems. It is perfect for controlling water, air, and vapour in the most critical areas of the building envelope. Ideal for sealing interfaces around windows, doors, curtain walls, and other façade penetrations. It ensures long-lasting protection and helps prevent leaks, air infiltration, and moisture related issues.



ACCESSORIES · **Effisus 2Bond DS** · **Effisus 2Adjoin DF** · **Effisus 2Bond GO** · **Effisus Bonding KFP | KF**

# Effisus EPDM ConnectionSeal

## Technical data

Essential characteristics	Method	Result
Thickness	EN 1849-2	0,75mm
Length	-	20lm
Width	-	1,50lm
Mass per unit area	EN 1849-2	0,96kg/m <sup>2</sup>
Reaction to fire	EN 13501-1	Class E
Resistance to water penetration	EN 1928 Method A	W1, Pass
	EN 1928 Method B	W1, Pass
Water vapour transmission (sd value)	EN 1931	73,6 m
Tensile strenght (MD/CD)	EN 12311-2	≥7.0 N/mm <sup>2</sup>
Elongation (MD/CD)	EN 12311-2	≥300%
Tear resistance (nail shank) (MD/CD)	EN 12310-1	≥50/86 N
Resistance to impact	EN 12691	≤150mm
Resistance to alkali	EN 1847	Pass
Artificial ageing by long term exposure	EN 1296 / EN 1931	Pass

# Effisus 2Bond DS



Double-sided self-sealing adhesive tape creating a permanent weatherproofing seal on concrete, aluminum, sheathing boards and many other substrates. Specifically designed to seal nail and screw penetrations, ensuring an effective and durable seal at these critical points.

## Technical data

Essential characteristics	EFFISUS 2BOND DS
Total thickness	1.54mm
Standard roll sizes	25mm x 15,25 lm 50mm x 15.25 lm
Temperature resistance	-57°C to >+93°C
Elongation	> 500% ± 100
Resistance to water penetration (EN 1928)	W1
Application temperature	-29°C to 66°C ambient
Material	Synthetic resins, thermoplastics and non-curing rubber (non butyl)



# Effisus 2AdJoin DF

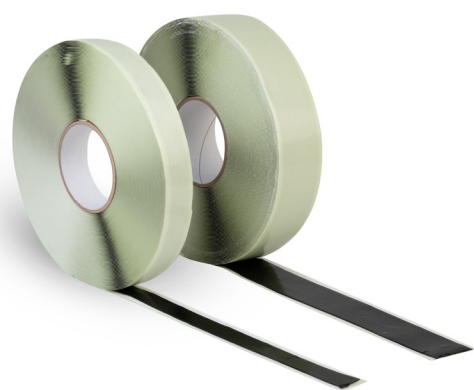


Double-sided, airtight, and moisture-resistant sealing tape suitable for positioning the Effisus EPDM ConnectionSeal Membrane onto the substrate.

## Technical data

Essential characteristics	EFFISUS 2ADJOIN DF
Standard roll size	2.5cm x 20.0 lm
Temperature resistance	-40°C to 90°C
Material	Acrylate, free of solvents and softeners

# Effisus 2Bond GO



Effisus 2Bond GO is an extruded butyl-rubber adhesive tape, water-resistant and with very high ageing resistance. It is used for sealing and bonding at roofs, windows, and facades as well as in timber, glass, and metal construction.

## Technical data

Essential characteristics	EFFISUS 2BOND GO
Total thickness	ca. 1mm
Adhesive	PIB/butyl rubber adhesive
Water resistance	Durable
Ageing resistance	Very high
Peel strength (IPM 5009)	≥ 20 N / 25mm
Tack	Very high
Temperature range	-30°C to +80°C
Application temperature	-5°C to +40°C
Core diameter	76mm

# Effisus Bonding KFP

Effisus Bonding KFP adhesive is used for bonding EPDM and butyl to concrete, masonry, wood, glass, aluminium, steel and bitumen or for lap joint connections.



## Technical data

Essential characteristics	EFFISUS BONDING KFP
Base	Styrene rubber, solvent-borne
Viscosity	Pasty
Colour	Black
Density	1,0 g/cm³
Solid content (by weight)	75%
Flash-off time / waiting time	30 sec
Open time	10 min
Consumption	200-300 g/cm²

# Effisus Bonding KF

Effisus Bonding KF is an adhesive with exceptional properties of adhesiveness and waterproofing. With exceptional bonding strength it is especially suitable for rough, uneven surfaces.



## Technical data

Essential characteristics	EFFISUS BONDING KF
Base	Styrene rubber
Temperature resistance	-40°C to +90°C
Colour	Black
Density	1,15 g/cm <sup>3</sup>